

# Konzert in C für Violoncello und Orchester

Concerto in C major for Violoncello and Orchestra

Hob. VIIb: 1

Joseph Haydn

Moderato

5

10

17

22

Vc. princ.

47

56

89

Viol. I

94

Viol. I

111 11 Viol. I

*p*

126

*f*

132

Cor. I Adagio: tacet

Finale  
Allegro molto

2

8

13

18 6

*p*

31 6

*f*

37 13

Corno I in Fa/F

54 Vc. princ. *p*

58 **39** Viol. I *f*

101

107 **47** Str. *f*

159 **6**

171 **16** Viol. I *p*

191 **38** Vc. princ.

233 **13** Vc. princ. *f*

250 *tr*

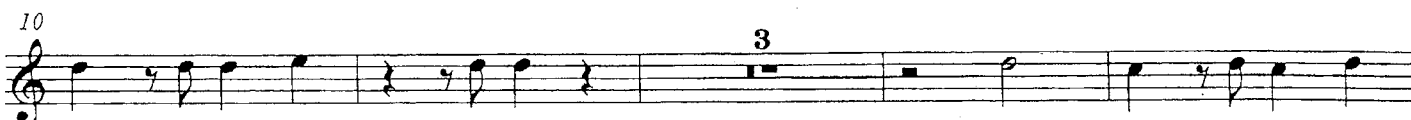
# Konzert in C für Violoncello und Orchester

Concerto in C major for Violoncello and Orchestra

Hob. VIIb: 1

Joseph Haydn

Moderato



111 Viol. I

*p* 11

126

*f*

132

Cor. I Adagio: tacet

Finale  
Allegro molto

2

8

13

1

18

*p* 2 6

31

*f*

37

13

54 Vc. princ.

*p*

58

39  
*f*

101

107

47 Str.  
*f*

159

6

171

16 Viol. I  
*p*

191

38 Vc. princ.

233

13 Vc. princ.  
*f*

250

*tr*

Corno II in Fa/F

# Konzert in C für Violoncello und Orchester

Concerto in C major for Violoncello and Orchestra

Hob. VIIb: 1

Joseph Haydn

Moderato

Musical score for Corno II in Fa/F, measures 1-100. The score is written in treble clef with a common time signature (C). The tempo is marked 'Moderato'. The key signature is one flat (F major). The score consists of ten staves of music. Measure numbers are indicated at the beginning of each staff: 5, 10, 17, 22, 47, 56, 89, and 94. Rehearsal marks with bar numbers are placed above the staves: 4, 19, 3, 30, and 12. The instruction 'Vc. princ.' is written above the staff starting at measure 19. The instruction 'Viol. I' is written above the staff starting at measure 89. The score includes various musical notations such as notes, rests, slurs, and articulation marks.

111 *p* 11 Viol. I

126 *f*

132

Cor. II Adagio: tacet

Finale  
Allegro molto

2

8

13 1

18 2 6 *p*

31 *f*

37 13



Corno II in Fa/F

54 Vc. princ.

*p*

58 Viol. I

39

*f*

101

107 Str.

47

*f*

159

6

171 Viol. I

16

*p*

191 Vc. princ.

38

233 Vc. princ.

13

*f*

250



111 11 Viol. I

*p*

This staff contains measures 111 through 115. It begins with a piano (*p*) dynamic. Measure 111 has a whole note G4. Measure 112 has a whole note A4. Measure 113 has a whole note B4. Measure 114 has a whole note C5. Measure 115 has a whole note D5. A first ending bracket covers measures 111-115, with a double bar line at the end. Above measure 115, the number '11' is written. Above measure 114, 'Viol. I' is written with a small musical notation.

126

*f*

This staff contains measures 126 through 131. It begins with a forte (*f*) dynamic. Measure 126 has a quarter note G4. Measure 127 has a quarter note A4. Measure 128 has a quarter note B4. Measure 129 has a quarter note C5. Measure 130 has a quarter note D5. Measure 131 has a quarter note E5. A slur covers measures 126-131.

132

This staff contains measures 132 through 137. Measure 132 has a quarter note G4. Measure 133 has a quarter note A4. Measure 134 has a quarter note B4. Measure 135 has a quarter note C5. Measure 136 has a quarter note D5. Measure 137 has a quarter note E5. A slur covers measures 132-137.

Cor. II Adagio: tacet

Finale  
Allegro molto

*2*

This staff contains measures 1 through 7. It begins with a 'Finale Allegro molto' section. Measure 1 has a whole note G4. Measure 2 has a whole note A4. Measure 3 has a whole note B4. Measure 4 has a whole note C5. Measure 5 has a whole note D5. Measure 6 has a whole note E5. Measure 7 has a whole note F5. A slur covers measures 1-7. Above measure 6, the number '2' is written.

8

This staff contains measures 8 through 12. Measure 8 has a quarter note G4. Measure 9 has a quarter note A4. Measure 10 has a quarter note B4. Measure 11 has a quarter note C5. Measure 12 has a quarter note D5. A slur covers measures 8-12.

13

*1*

This staff contains measures 13 through 17. Measure 13 has a quarter note G4. Measure 14 has a quarter note A4. Measure 15 has a quarter note B4. Measure 16 has a quarter note C5. Measure 17 has a quarter note D5. A slur covers measures 13-17. Above measure 16, the number '1' is written.

18

*p* *2* *6*

This staff contains measures 18 through 25. Measure 18 has a quarter note G4. Measure 19 has a quarter note A4. Measure 20 has a quarter note B4. Measure 21 has a quarter note C5. Measure 22 has a quarter note D5. Measure 23 has a quarter note E5. Measure 24 has a quarter note F5. Measure 25 has a quarter note G5. A slur covers measures 18-25. Above measure 18, the number '2' is written. Above measure 24, the number '6' is written. A piano (*p*) dynamic is indicated below measure 22.

31

*f*

This staff contains measures 31 through 36. Measure 31 has a quarter note G4. Measure 32 has a quarter note A4. Measure 33 has a quarter note B4. Measure 34 has a quarter note C5. Measure 35 has a quarter note D5. Measure 36 has a quarter note E5. A slur covers measures 31-36. A forte (*f*) dynamic is indicated below measure 31.

37

*13*

This staff contains measures 37 through 44. Measure 37 has a quarter note G4. Measure 38 has a quarter note A4. Measure 39 has a quarter note B4. Measure 40 has a quarter note C5. Measure 41 has a quarter note D5. Measure 42 has a quarter note E5. Measure 43 has a quarter note F5. Measure 44 has a quarter note G5. A slur covers measures 37-44. Above measure 44, the number '13' is written.

Corno II in Do/C

54 Vc. princ. *p*

58 39 Viol. I *f*

101

107 47 Str. *f*

159 6

171 16 Viol. I *p*

191 38 Vc. princ.

233 13 Vc. princ. *f*

250