

CONTRA BASSOON

MONTE CARLO OR BUST

OVERTURE

Andante Moderato (MAESTOSO)

First staff of music in bass clef, 2/4 time signature. It begins with a dynamic marking of *f* and ends with *ffp*. The melody consists of eighth and quarter notes with various accents.

Second staff of music, starting with a dynamic marking of *p*. It includes the instruction *ACCELERANDO* above the staff. A first ending bracket labeled **A** is placed over the final two measures, which are marked *PRESTO* and *sfz*.

Third staff of music, featuring a second ending bracket labeled **B** over the final two measures.

Fourth staff of music, starting with a dynamic marking of *sim.* and a third ending bracket labeled **C** over the first two measures.

Fifth staff of music, continuing the melodic line with eighth and quarter notes.

Sixth staff of music, continuing the melodic line.

Seventh staff of music, featuring a fourth ending bracket labeled **D** over the final two measures.

Eighth staff of music, ending with a dynamic marking of *ff* and a fifth ending bracket labeled **E** over the final two measures.

Ninth staff of music, concluding the piece with a final chord.

Musical staff with notes, accents, and a boxed letter 'F'. Includes dynamic marking *ff*.

Musical staff with notes, accents, a boxed letter 'G', and fingerings 2, 3, 4, 5, 6.

Musical staff with notes, accents, a boxed letter 'H', and fingerings 2, 3, 4.

Musical staff with notes, accents, a boxed letter 'I', and fingerings 2, 3, 4, 5, 6.

Musical staff with notes, accents, a boxed letter 'J', and fingerings 2, 3, 4.

Musical staff with notes, accents, a boxed letter 'K', dynamic marking *sim.*, and *stan*.

Musical staff with notes, accents, and fingerings 2, 3, 4.

Musical staff with notes, accents, a boxed letter 'L', dynamic markings *f* and *p*, and tempo marking *Andante Moderato*.

Musical staff with a boxed letter 'N', time signature $\frac{6}{8}$, and a bar with '12'.

V.S.

Empty musical staff lines.

C/Bsn.

Fig 1

0

P

Q

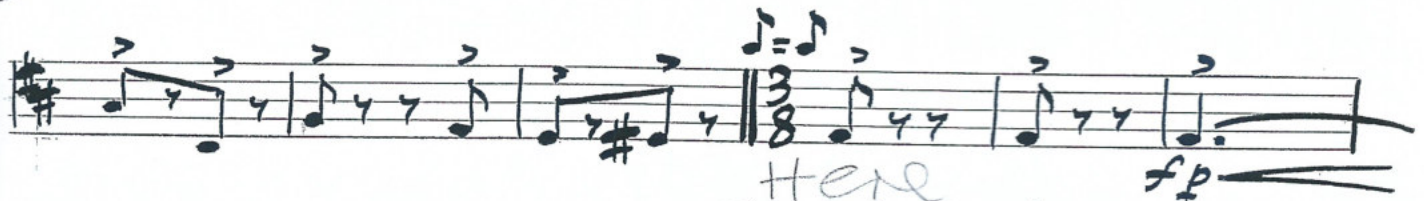
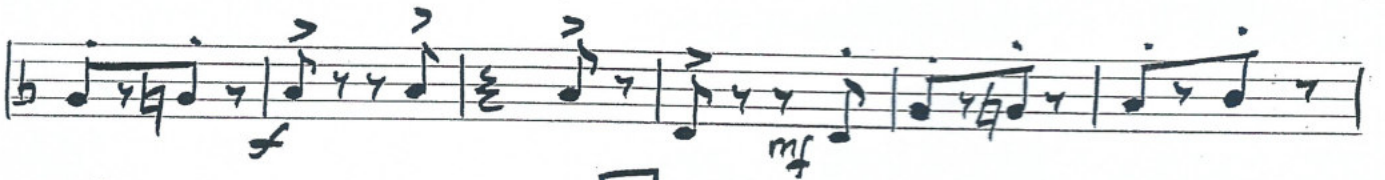
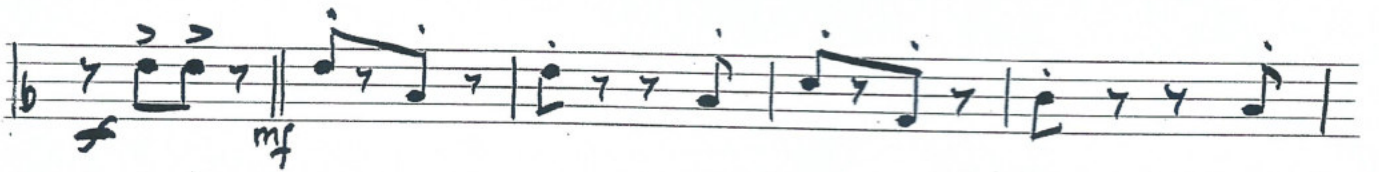
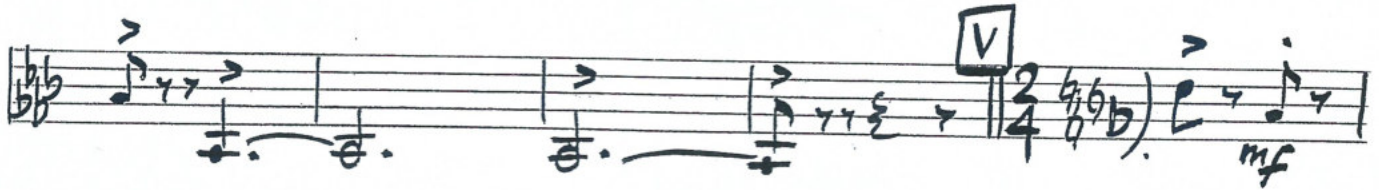
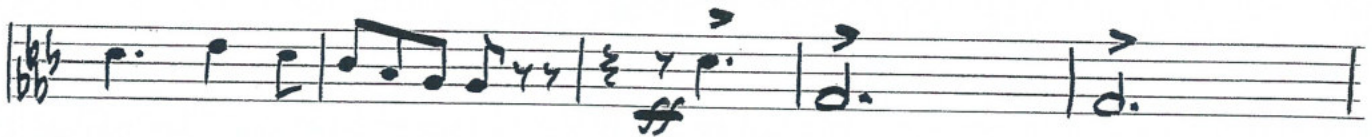
LEGRRO (con Brio)

R

T

U

C/Bsn



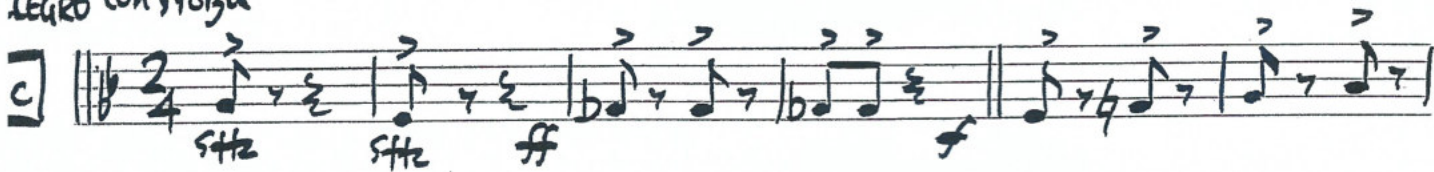
Monte Carlo

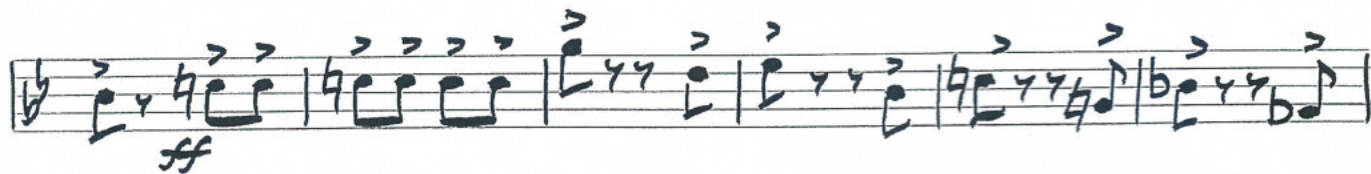
(on 8th bar)

Poco Rall. \curvearrowright

A 

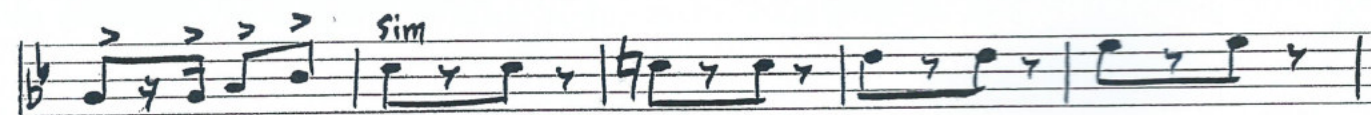
LEGGRO Con Forza

C 



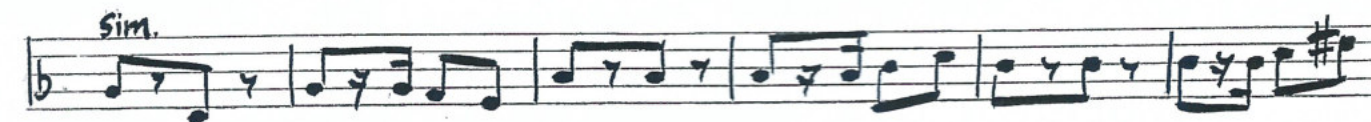






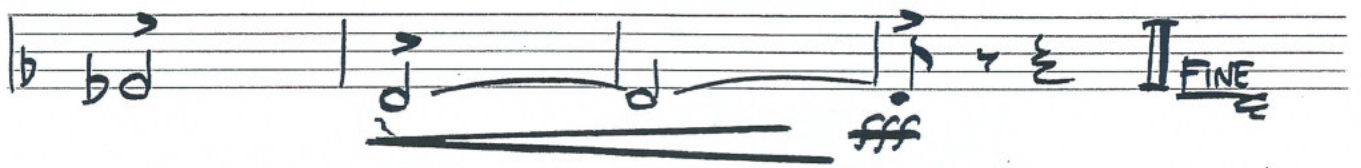


EE 





C/Bsn.



Monte Carlo