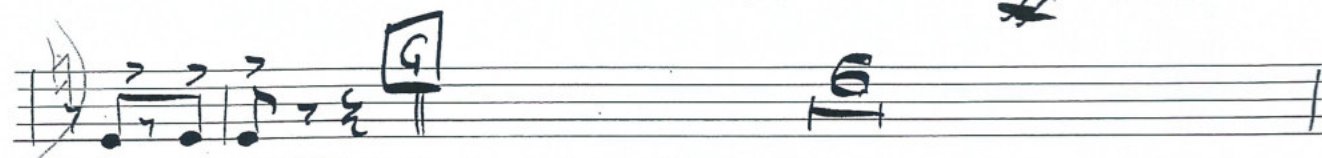
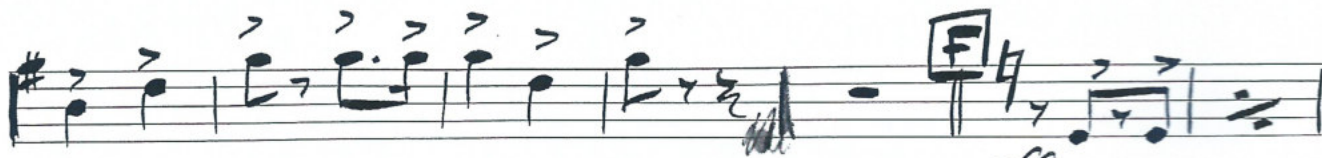
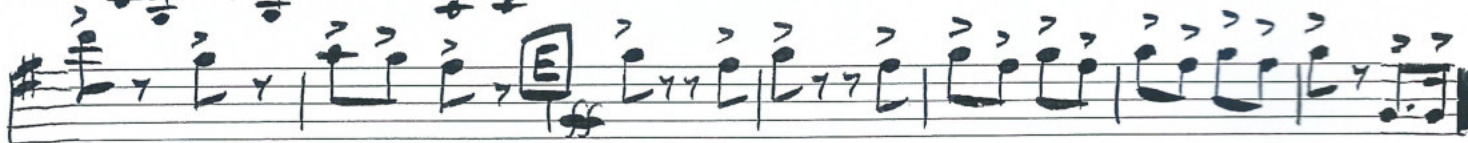
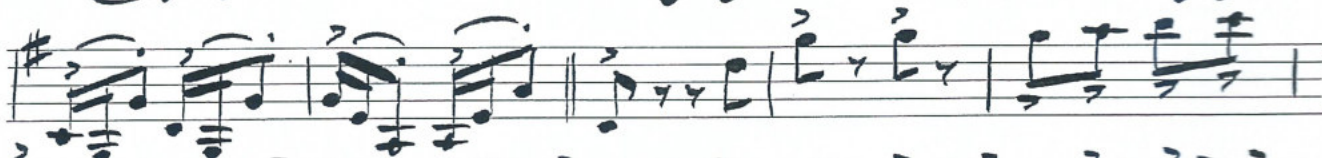
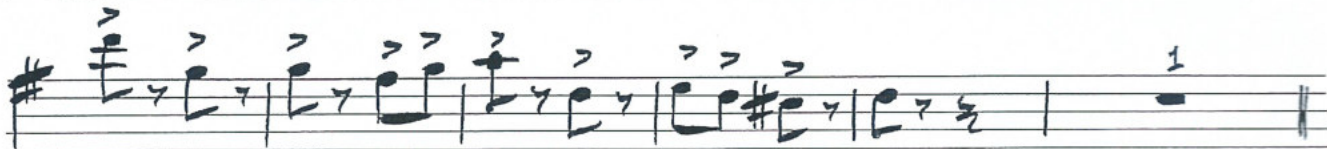
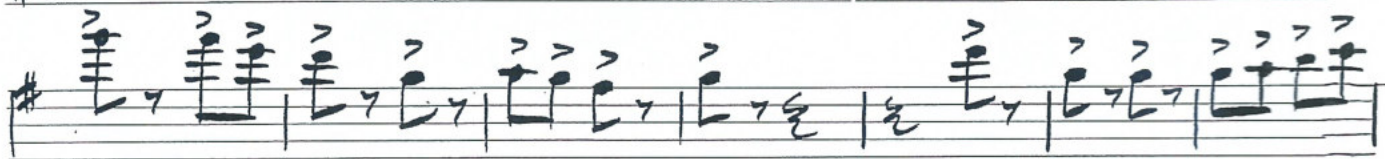


Bb CLARINET 1

OVERTURE

ANDANTE MODERATO (MAESTOSO)



7

ANDANTE
MODTO (Giacoso)

ALLEGRO
CON BRIO

Handwritten musical score for a piece titled "CLT 1." The score is written on ten staves. It begins with the tempo marking "ALLEGRO CON BRIO" and a key signature of one sharp (F#). The first staff contains a boxed letter "R" and a circled letter "S". The second staff contains a boxed letter "T". The third staff contains a circled letter "U". The fourth staff contains a circled letter "V" and the instruction "L'ISTESSO". The score includes various musical notations such as notes, rests, dynamics (f, p, ff), and articulation marks (accents, slurs). The key signature changes to one flat (Bb) in the fourth staff and remains there through the end of the piece. The piece concludes with a double bar line.

FL

FL

BB

V.S.

S.F. CUT

Cl. 1 Monté Carlo

CC ALLEGRO *Con Sforza* 4/4 *Forced* *sim*

Handwritten musical notation for the first system, measures 1-4. It features a treble clef, a key signature of one sharp (F#), and a 4/4 time signature. The music consists of eighth and sixteenth notes with various dynamics and articulations.

EE *sim*

Handwritten musical notation for the second system, measures 5-12. It continues the melodic line with various dynamics and articulations. A circled 'DD' appears in measure 7.

FF

Handwritten musical notation for the third system, measures 13-16. It features a treble clef, a key signature of one sharp (F#), and a 4/4 time signature. The music consists of eighth and sixteenth notes with various dynamics and articulations.

GG *RALL* *MOLTO*

Handwritten musical notation for the fourth system, measures 17-20. It features a treble clef, a key signature of one sharp (F#), and a 4/4 time signature. The music consists of eighth and sixteenth notes with various dynamics and articulations.

tr

Handwritten musical notation for the fifth system, measures 21-24. It features a treble clef, a key signature of one sharp (F#), and a 4/4 time signature. The music consists of eighth and sixteenth notes with various dynamics and articulations.

FF *7/8* **FINE**

Handwritten musical notation for the sixth system, measures 25-28. It features a treble clef, a key signature of one sharp (F#), and a 7/8 time signature. The music consists of eighth and sixteenth notes with various dynamics and articulations.