

Tschaikowsky Aus „Dornröschen“ Suite op. 66a

4

Nº 5. Valse.

Corno III in F.

Allegro. (Tempo di Valse)

cre - scen - do mp cre - scen - do

- do mf cresc. f cre - scen - do

ff

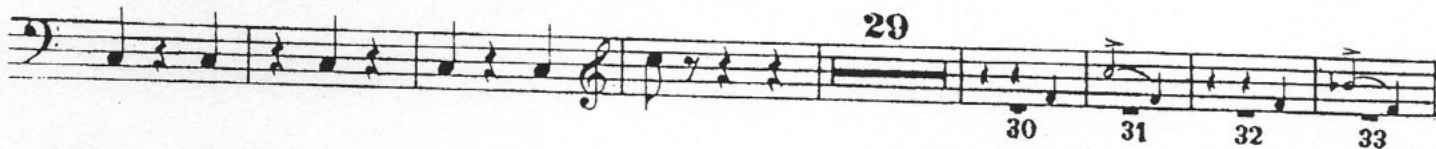
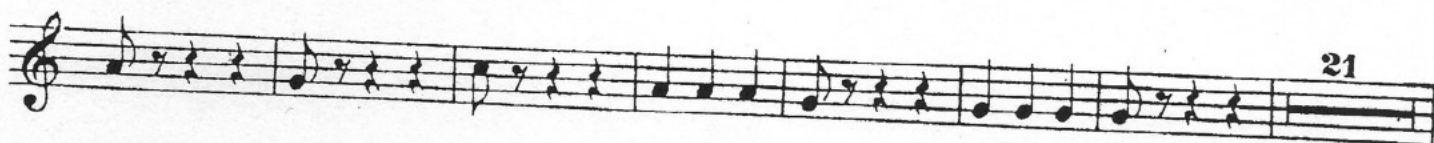
p

più f

f *p*

f *ff* *ff*

Corno III in F.



Corno III in F.

