

Tschaikowsky Aus „Dornröschen“ Suite op. 66a

4

№ 5. Valse.

Corno I in F.

Allegro. (Tempo di Valse.)

ff *p* cre - scen - do *mp* cre - scen - do *mf*

cresc. *f* cre - scen - do *ff*

p

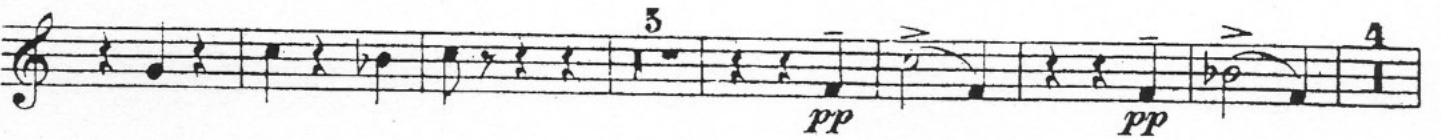
piu f *f*

p

f *ff*

ff

Corno I in F



Corno I in F.

ff

21 22 23 24 25

Vib. I.

1

f ff